




Meifod Mill, Groesffordd Marli, Abergele, LL22 9DU

Offers Over £800,000

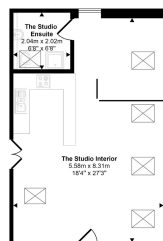
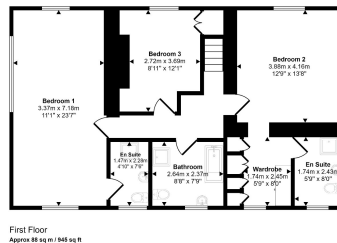
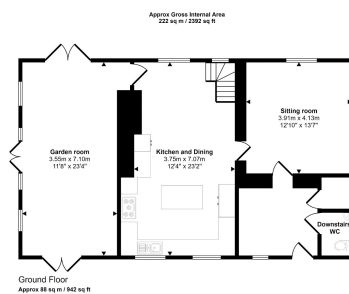
 3  3  3



A most desirable residence set in a private secluded location, surrounded by glorious countryside. With the benefit of luxurious ancillary accommodation that can be used as a granny annexe or for a dependent relative. Comprising of three double bedrooms, two with en-suite, dressing room, beautifully designed kitchen/dining area, four piece bathroom suite, cosy lounge with multi purpose stove, bright sitting room and ground floor cloakroom. Separate to the main property the annexe offers a studio feel with open plan lounge/kitchen/dining space, area for a king bed and separate three piece shower room suite. Located within 3 miles of the town Abergele and nestled in the countryside providing a feeling of total privacy and tranquillity.

Key Features

- Surrounded by beautiful countryside views
- Three Double Bedrooms
- Double Garage
- 0.5 Acres
- Council Tax Band - TBC
- Modernized Detached House
- Separate Annexe
- Private driveway
- EPC - D
- Tenure - Freehold



Devices show height in inches (24)

This brochure is only for illustrative purposes and is not to scale. Measurements of rooms, doors, windows, and any items are approximate and no responsibility is taken for any errors, omissions or mis-statements. Some of items such as bathroom suites are representations only and may not look like the real items. Make with Meads Property Ltd.

CONSUMER PROTECTION REGULATIONS 2008 AND THE BUSINESS PROTECTION FROM MISLEADING MARKETING REGULATIONS 2008

These particulars, whilst believed to be accurate, are set out to for guidance only and do not constitute any part of an offer or contract. Prospective purchasers or tenants should not rely on these particulars as statement or representation of fact, but must satisfy themselves by inspection or otherwise as to their accuracy. No person in the employment of PETER LARGE Estate Agents has the authority to make or give any representation or warranty in relation to the property. Room sizes are approximate and all comments are of the opinion of PETER LARGE Estate Agents having carried out a walk through inspection. These sales particulars are prepared under the consumer regulations 2008 and are governed by the business from misleading marketing regulations 2008.